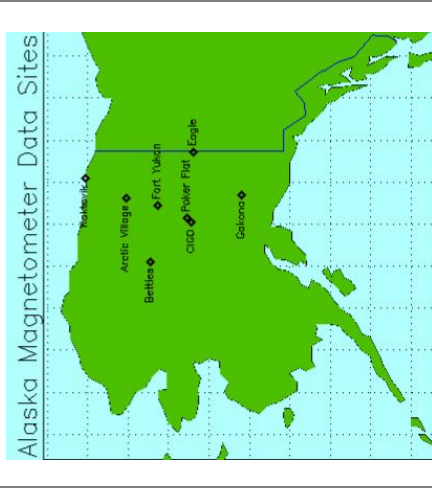
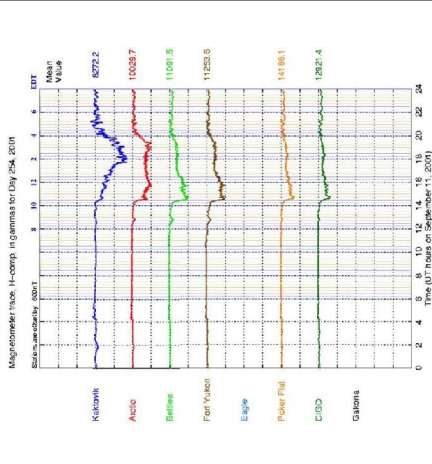


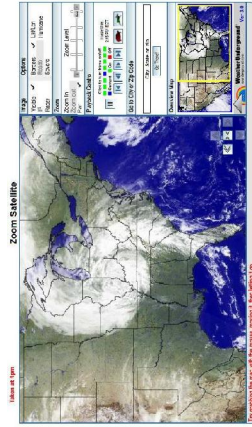
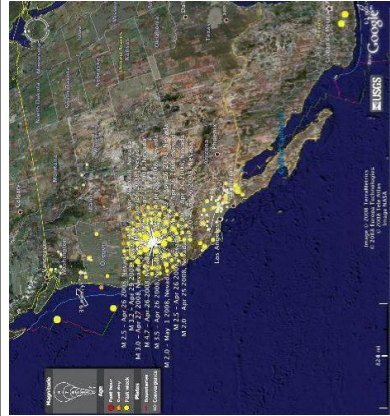
Magnetometer Data

One of the most striking elements of the data presented is that from a set of magnetometers monitored by the University of Alaska. Several instruments show significant deviations from "background" or "normal" readings as the events of 9/11 were unfolding. Further selections of this data are presented in relation to variations during the hurricane seasons of 2001, 2004 and 2005.

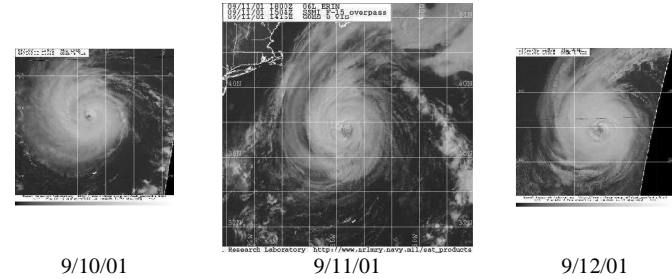


Earthquake Links?

A later part of the study examines some of the data relating to patterns of earthquakes and unusual weather patterns, which may be related to secret or partially disclosed environmental modification technology (such as HAARP), though no direct link to the events on 9/11 is established.



New Study by former Professor Examines Hurricane Erin on 9/11/01



20th May 2008 – Clemson SC. - Dr. Judy Wood, a former Professor of Mechanical Engineering, has posted a new study which highlights the possible links between events on 9/11 and the occurrence in the Atlantic ocean of Hurricane Erin.

The new study, (posted at <http://www.drjudywood.com/articles/erin>) considers the "Field Effects" associated with Hurricanes and energy effects involved in the destruction of the World Trade Centre complex in New York City on 9/11. Dr. Wood's extensive research has already catalogued a substantial range of evidence of very unusual effects at the WTC site on and since 9/11. The preponderance of this evidence points to the use of one or more Directed Energy Weapons in the destruction of the WTC buildings. This general conclusion has been the focal point of her Qui Tam Case against NIST's contractors. The defendants are accused of committing fraud, including "wilful indifference" which resulted in them presenting a deceptive analysis and false data constructs, which were then used to compile the NCSTAR1 reports (See http://www.drjudywood.com/articles/NIST/Qui_Tam_Wood.html).

Earlier, in January 2008, Dr. Wood posted a study on her website (<http://drjudywood.com/articles/JJ>), which relates effects seen in photographs taken before, during and after the destruction of the WTC complex, to effects seen in Hutchison's ongoing experiments. Wood and Hutchison co-authored the study. The Hutchison Effect is primarily a "Field Effect", seemingly created by a poorly understood interaction between electrostatic, magnetic and radio frequency fields.

The new pictorial study (which also relates to Field Effects) notes that Hurricane Erin was "born" on about 1 September 2001, and travelled up towards NYC. Hurricane Erin was the closest to NYC on 9/11/01 and was the largest on this date (although wind speeds were greater the day before). Close-ups from photos of Erin on 9/11 clearly show the plume of material from the destroyed WTC.

The development of Erin is considered, and a comparison made to Hurricane Katrina, for the reason that Katrina and Erin were of comparable size (Erin was bigger, by most measures). It is noted that the media reported very little about the potential risk Erin posed around the time of 9/11, compared to what was reported regarding Katrina – even before Katrina made landfall.

The relationship between 9/11, the Hutchison Effect, Field Effects and data regarding Hurricane and Weather Modification is introduced. No firm conclusions are drawn, data is merely presented to illustrate where highly significant common themes and patterns seem to be present. For example, a short comparison is drawn between some of the effects seen with the materials in collision (caused by the effects of Tornadoes and hurricanes) with the anomalous changes in materials seen with Hutchison Effect. Apparent levitation effects seen in some instances are also highlighted.

The development of "super cell" storms is examined and a comparison of their structure to that of a Tesla Coil (used to create high voltage electrical discharges) is considered. The possibility is suggested that the electrical properties of large storm systems may have some similarities to those of Tesla coils and that there

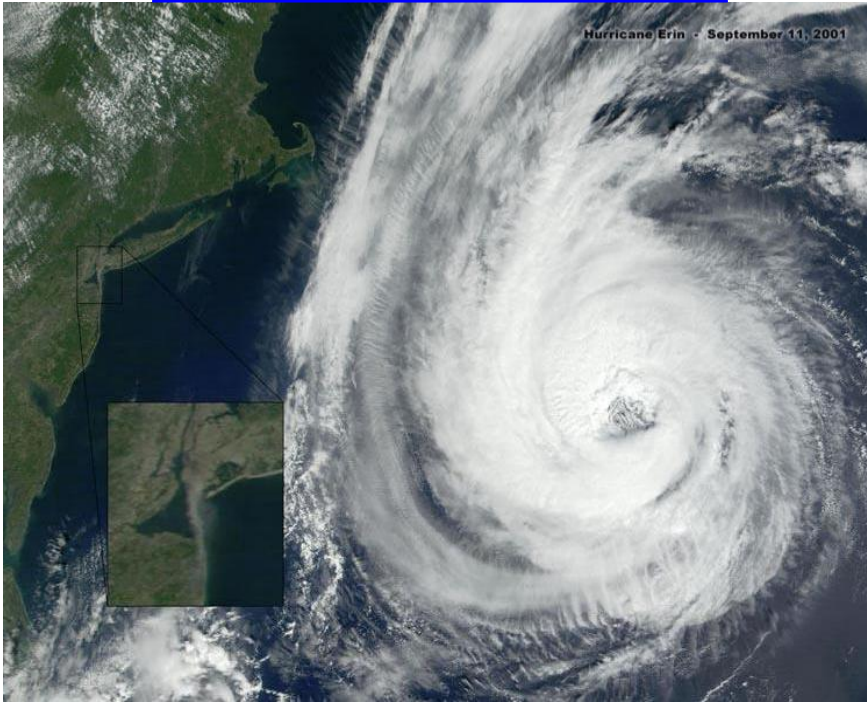
is a possibility that technology exists to utilise or manipulate the energy in these storm systems for “secondary” purposes.

One of the most striking pieces of the data presented is that from a set of magnetometers monitored by the University of Alaska. Several instruments show significant deviations from “background” or “normal” readings as the events of 9/11 were unfolding. A further selection of this data is presented in relation to variations during the hurricane seasons of 2001, 2004 and 2005.

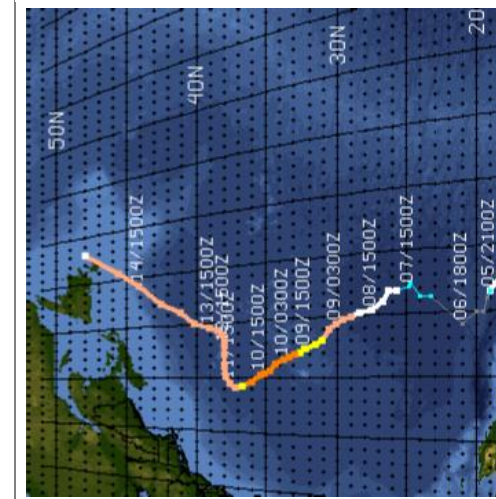
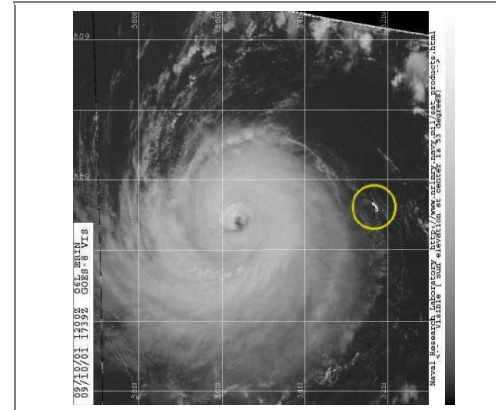
A later part of the study examines some of the data relating to patterns of earthquakes in 2008 and possibly associated unusual weather patterns, which may be related to secret or partially disclosed environmental modification technology (such as HAARP). However, the study does not establish any clear links between HAARP and the events in New York on 9/11.

Hurricane Erin, September 11, 2001

<http://www.drjudywood.com/articles/erin/>



The crew of the International Space Station (ISS) can see "terrorist Carnage" in NYC on 9/11/01, they did not report seeing a hurricane that was just out of their camera shot (this video was shown on CNN).



Comparison of Hurricane Data

The development of the Erin is considered, and a comparison made to Hurricane Katrina, for the reason that Katrina and Erin were of comparable size (Erin was bigger, by most measures), yet we heard almost nothing of the risk Erin posed near 9/11 compared to what we heard about Katrina. Erin was also the subject of an extended study mission which united researchers from 10 universities, five NASA centers and the National Oceanic and Atmospheric Administration”.

Levitation, Material Effects and Storm Effects

A short comparison is drawn between some of the effects seen with the materials in collision in Tornados and hurricanes with the anomalous changes in materials seen with Hutchison Effect.