

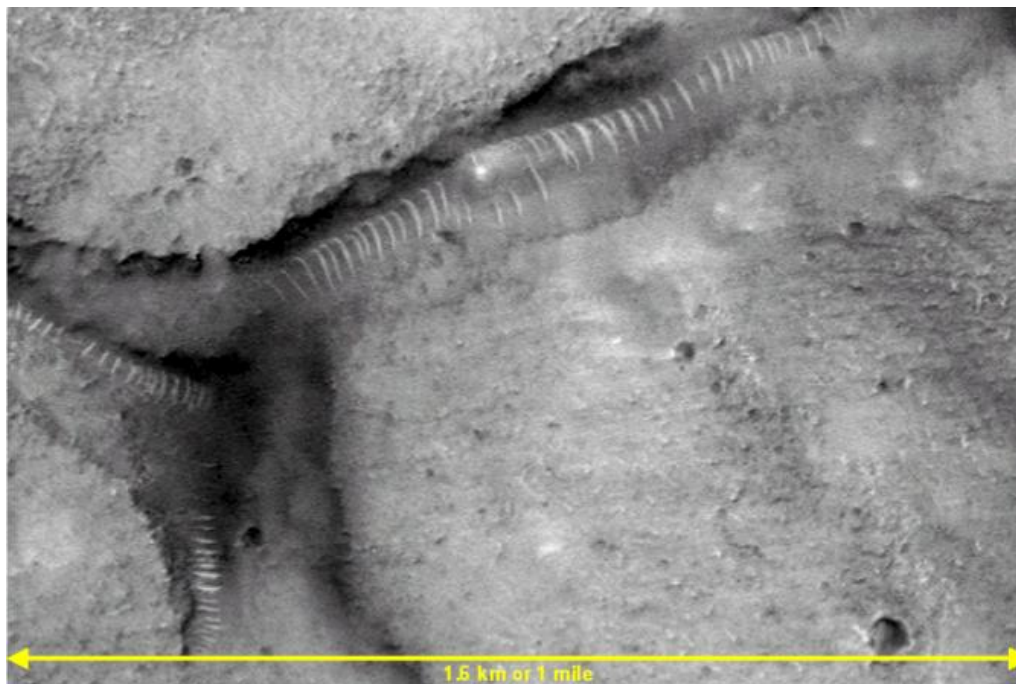
“T” Structure

- MGS Image **SP243004** (South east of Olympus Mons)
- Natural channels rarely end in a perpendicular 'T'-shape for obvious reasons.
- I could find no other references to this image which attempted to explain its origin.



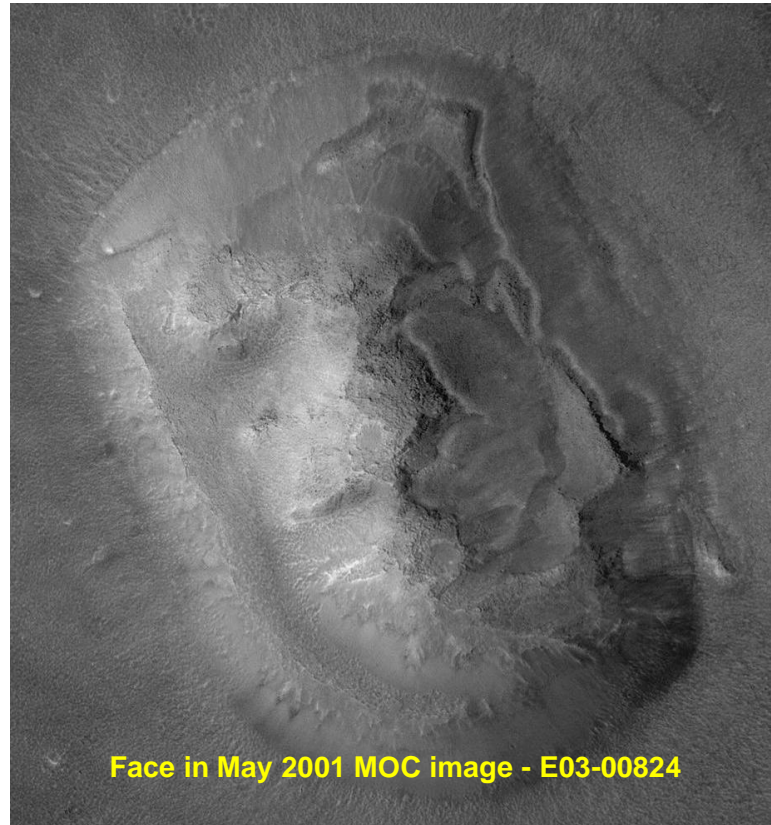
Glass Tubes?

- MGS Image M04-00291
- To me, these look like regular – probably artificial structures.
- “Realists” say there are Sand Dunes or piled up rocks.



MGS Image of “The Face”

- MGS has photographed the face again on several occasions, one of the later images being shown here.
- NASA generally take the view that these new images indicate the face is more likely to be a natural feature. However, simply look at the **Curved top, relatively straight sides and curved bottom!**



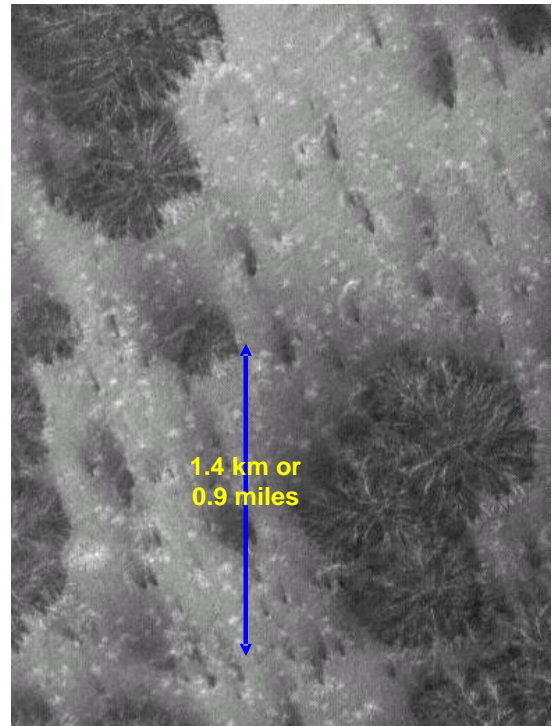
2008 MRO “HiRise” Images of Dome - (PSP_007230_2170)

- 10 Feb 2008 - http://hirise.lpl.arizona.edu/PSP_007230_2170



Trees?

- Found near the Polar Region MGS image **m0804688a**.
- Arthur C. Clarke (acclaimed Author) has stated his beliefs about the discoveries on Mars. On 06 June 2001, he said: "I'm quite serious when I say have a really good look at these new Mars images," Clarke said. "Something is actually moving and changing with the seasons that suggests, at least, vegetation," he said.
- Conversely, James Rice, a planetary geologist at Arizona State University said: "Most of the images in question that I looked over are of dunes in the polar regions. They are beginning to defrost as winter draws to a close. The sand composing the dunes is dark and frost is bright, thereby causing the spotted pattern as the dune defrosts. This is not vegetation but rather the natural defrosting of dunes and sand sheets."



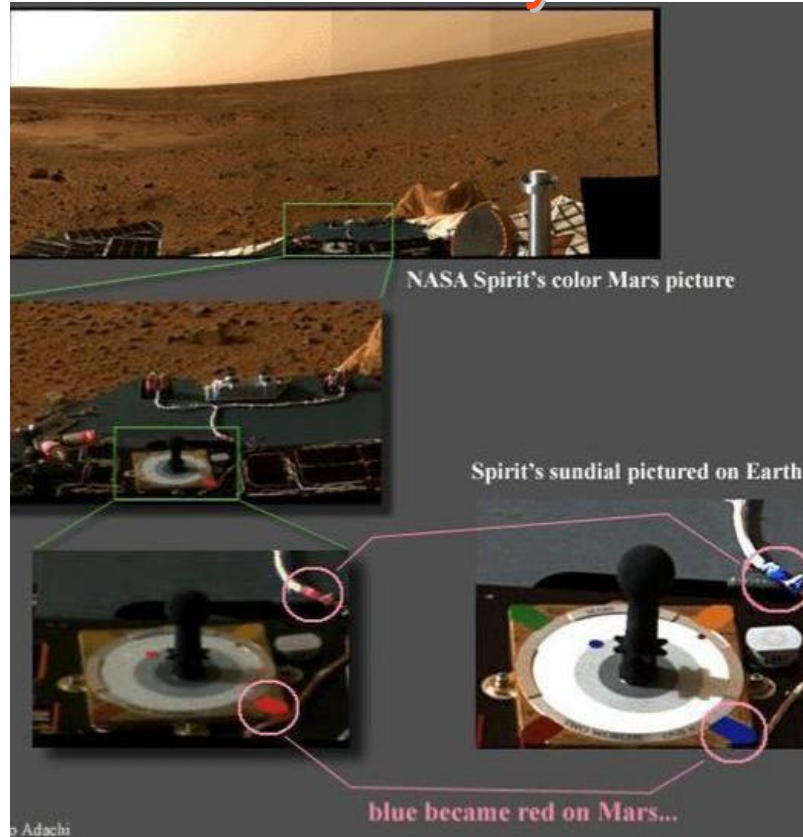
2008 MRO "HiRise" Images of "Caterpillar" - (PSP_007230_2170)

17

- 10 Feb 2008 - http://hirise.lpl.arizona.edu/PSP_007230_2170

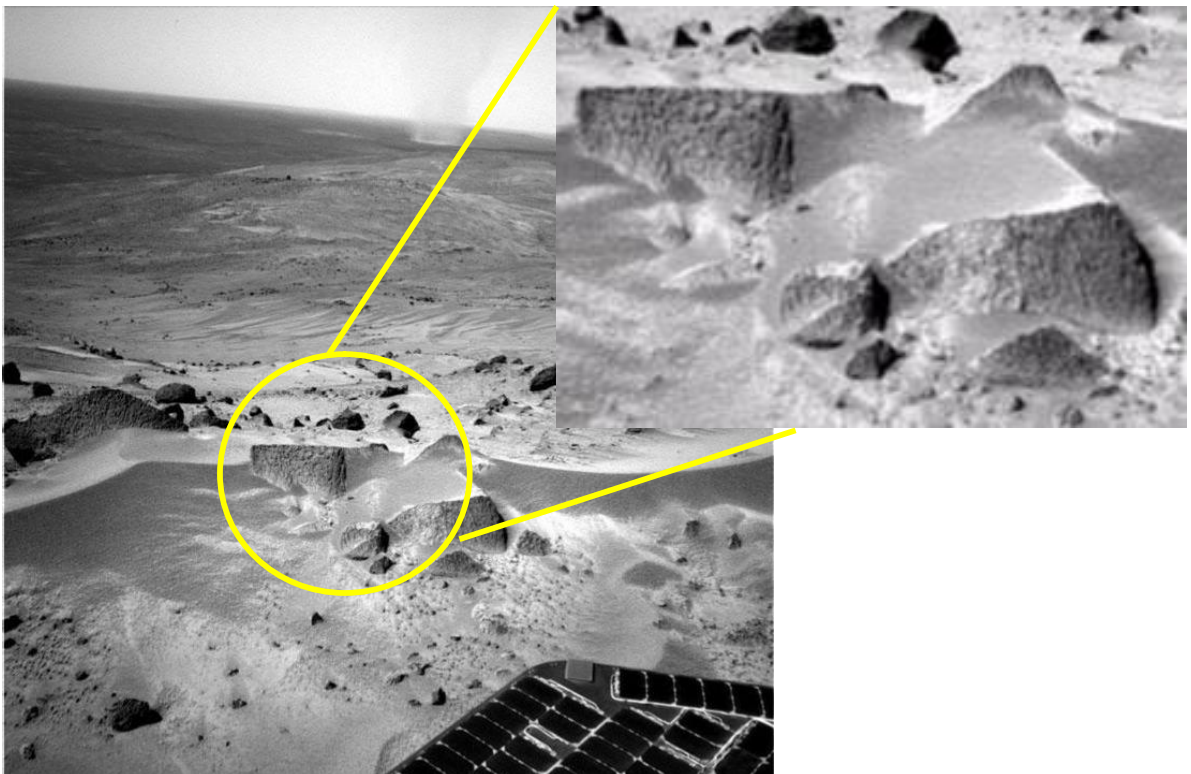


What Colour is the Sky on Mars? #1⁶



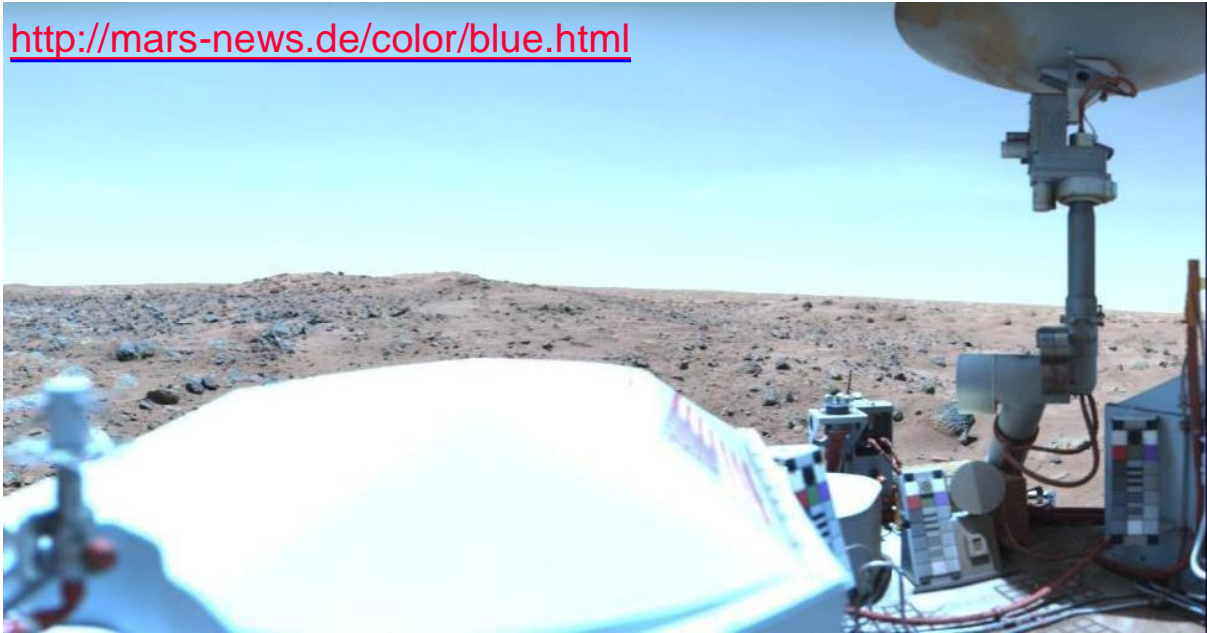
Squared off Blocks??

19



Viking Surface Pictures - 2

- [Holger Isenberg](#) has taken original Viking Lander image data and re-processed and enhanced it to produce the image below
- <http://mars-news.de/color/blue.html>



More Strange Objects...



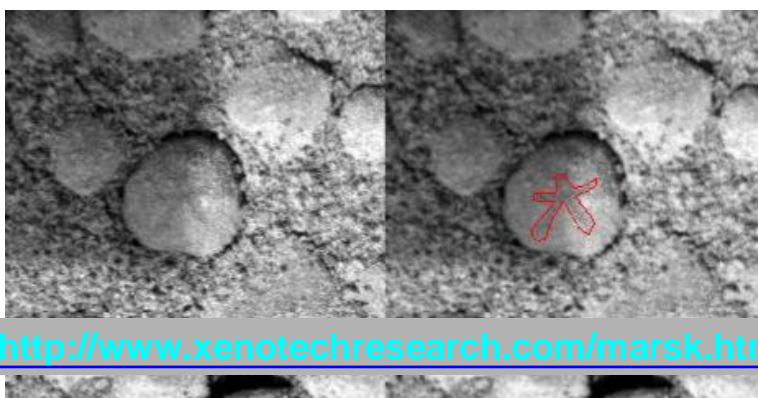
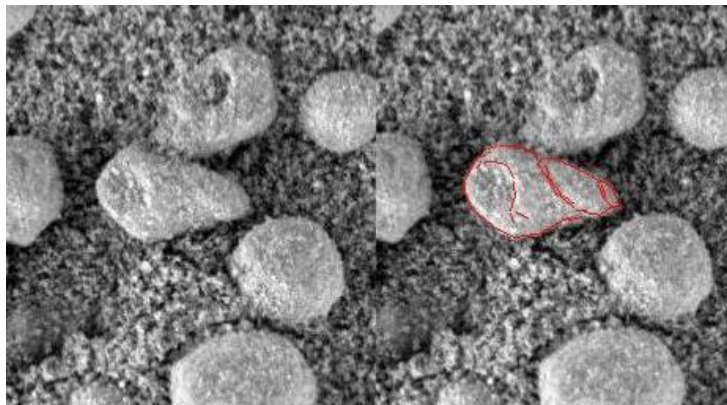
- <http://photojournal.jpl.nasa.gov/catalog/PIA05984>

Please review these Websites

- Please see these Websites for more information:
- <http://mars-news.de/>
- <http://xenotechresearch.com/>
- <http://mars.spherix.com/mars.html>
- <http://homepage.mac.com/alandmoen/>
- www.enterprisemission.com
- <http://www.checktheevidence.com/>

Contact: Andrew Johnson ad.johnson@ntlworld.com

Why isn't NASA talking about the Fossils on Mars?



<http://www.xenotechresearch.com/marsk.htm>