



10th June 2005, 21-45, Borrowwash, Derbs

What causes the grid of Aircraft Trails?
Why does this happen so regularly?



12th Sept 2005, 10-21, Lake District

Why do these trails appear on some days, and not others?



Embsay, Yorkshire 29th Aug 2005

Why won't Environmental Groups (such as **Greenpeace** **WWF**) talk about the real nature of these trails?



Crewe Railway station, Cheshire, August 17, 2007, 07.20 a.m.

LOOK UP!
You'll soon notice them!
Ask questions about the trails! What is **really** happening in our skies?



Why can these trails be seen from space? Why are the clouds in lines?

Why won't the **Civil Aviation Authority** and **Department for Transport** answer questions about these persistent trails?



Paris, 24th August 2005, 11am

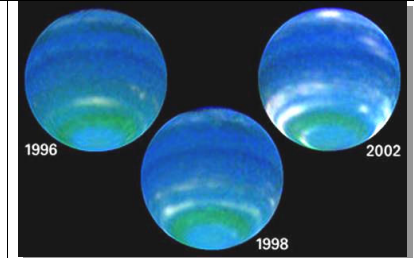
Why do they seem to appear everywhere in the UK (and globally), not just near airports?

Google **"Chemtrails"** or See www.checktheevidence.com/chemtrails/

Carbon Footprinting? Climate Change? Global Warming? **But what about ...**

Significant changes have been seen on **ALL** the planets in the last 30 years - e.g. bright, high-altitude clouds on Neptune (Hubble Telescope photos).

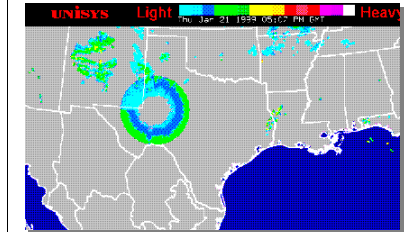
Google **"sun blamed solar system"**



What causes **CIRCULAR** rainfall patterns (as detected on weather radar)? There are many of these photos if you look for them.

http://members.tripod.com/~DELTA_9/

Google **"weather radar anomalies"**



This image caused quite a stir in late summer 2003 when it was captured some place in Alabama, it even made it onto the BBC News Website!

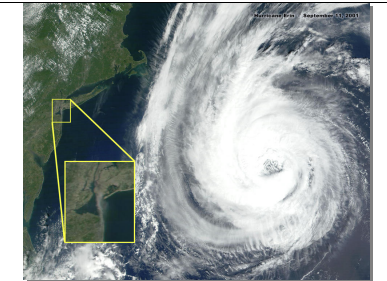
Google **"Strange Skies"**



Was it just a coincidence that a **Hurricane** was at its closest to NYC on **9/11/01**? Why was it barely reported, when it was **bigger than Hurricane Katrina**?

(The zoomed portion shows the plume from the WTC)

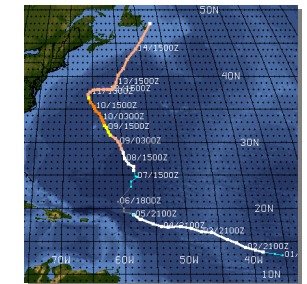
Google **"Erin 9/11 Field Effects"**



Erin went in a fairly straight line from Bermuda towards NYC, then made a right hand turn. Why? How? **Check This!**

Google **"Erin 9/11 Field Effects"**

Conclusion: Geoengineering is already taking place without your knowledge or consent!



Hadley Climate Research Unit: "I've just completed Mike's Nature **trick** of adding in the real temps to each series for the last 20 years (ie from 1981 onwards) and from 1961 for Keith's to **hide the decline**." - **Phil Jones** - Google **Climategate**

Google **"Climate Data Challenge"** or See <http://www.drjudywood.com/> - www.checktheevidence.com