



10<sup>th</sup> June 2005, Borrowash, Derbs, UK

What causes the grid of Aircraft Trails?  
Why does this happen so regularly?



12th Sept 2005, 10-21, Lake District

Why do these trails appear on some days, and not others?



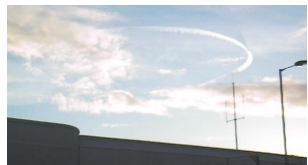
Embsay, Yorkshire 29<sup>th</sup> Aug 2005

Why won't Environmental Groups (such as Greenpeace WWF) talk about the real nature of these trails?



Crewe Railway station, Cheshire, August 17, 2007, 07.20 a.m.

**LOOK UP!**  
You'll soon notice them!  
Ask questions about the trails! What is **really** happening in our skies?



Circle - Edinburgh - Dec 2009



Circle - Leeds - Sept 2007

Why won't the Civil Aviation Authority and Department for Transport answer questions about these persistent trails?



Cirencester, 24th Sep 2009

Why do grids and patterns seem to appear everywhere in the UK (and globally)?



Louth, Lincs, 19 Jan 2012

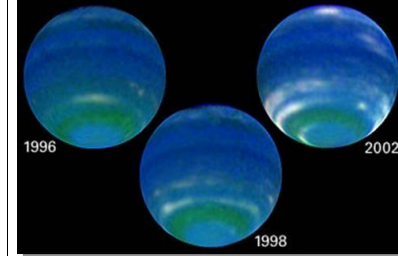
Google "Chemtrails" or See [www.checktheevidence.com](http://www.checktheevidence.com) - [www.educate-yourself.org](http://www.educate-yourself.org)

Carbon Footprinting? Climate Change? Global Warming? But what about ...

Significant changes have been seen on ALL the planets in the last 30 years - e.g. bright, high-altitude clouds on Neptune (Hubble Telescope photos).

Google "sun blamed solar system"

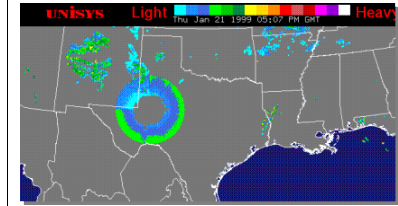
Google "Saturn storm Dec 2009"



What causes CIRCULAR rainfall patterns (as detected on radar)? There are many of these photos if you look for them.

[http://members.tripod.com/~DELTA\\_9/](http://members.tripod.com/~DELTA_9/)

Google "weather radar anomalies"

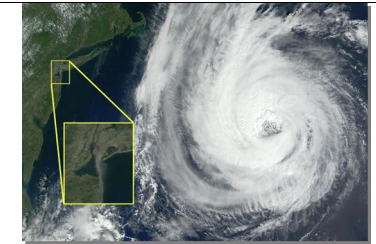


This image caused quite a stir in late summer 2003 when this image was captured some place in Alabama, it even made it onto the BBC News Website!

Google "Strange Skies"



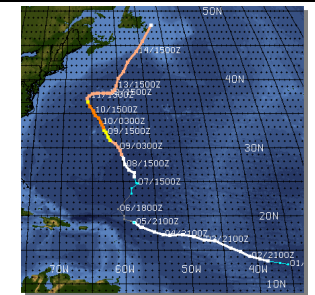
Was it just a coincidence that, at about 8am on 9/11/01, a Hurricane was at its closest to NYC? Why was it barely reported, when it was bigger than Hurricane Katrina? (The zoomed portion shows the plume from the WTC) - Google "Erin 9/11 Field Effects"



Erin went in a fairly straight line from Bermuda towards NYC, then made a right-hand turn. Why? How? Check This!

Google "Erin 9/11 Field Effects"

Looks like Geoengineering is already taking place without your knowledge or consent!



Hadley Climate Research Unit: "I've just completed Mike's Nature **trick** of adding in the real temps to each series for the last 20 years (ie from 1981 onwards) and from 1961 for Keith's to **hide the decline**." - Phil Jones - Google Climategate

Google "Climate Data Challenge" or See <http://www.drjudywood.com/> - [www.checktheevidence.com](http://www.checktheevidence.com)